

# HAIR COLLECTION



## Ideal Collection Site

If available, collect hair from here.



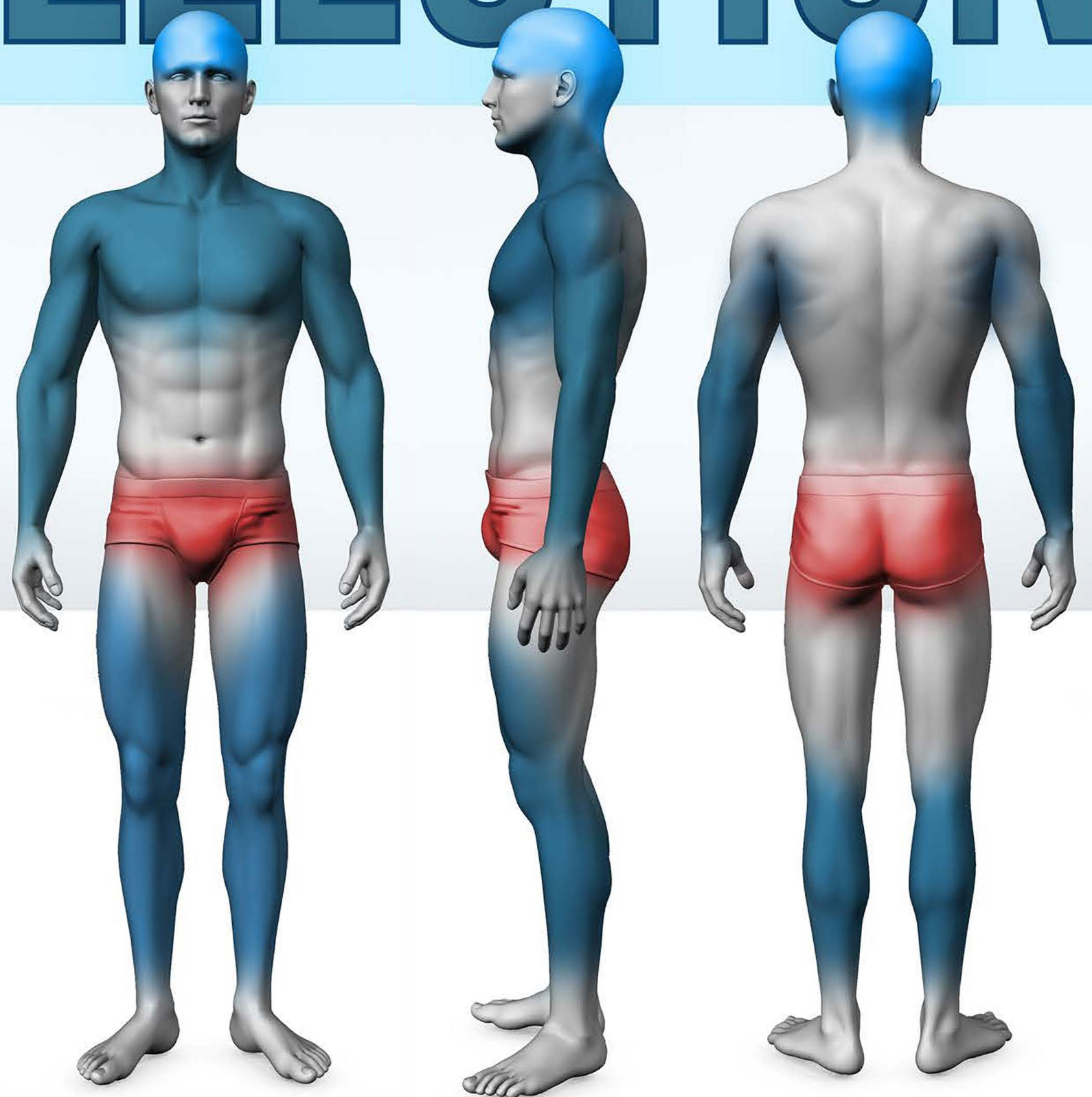
## Secondary Collection Sites

If bald, collect from here.



## Not Accepted

Do not collect from here.

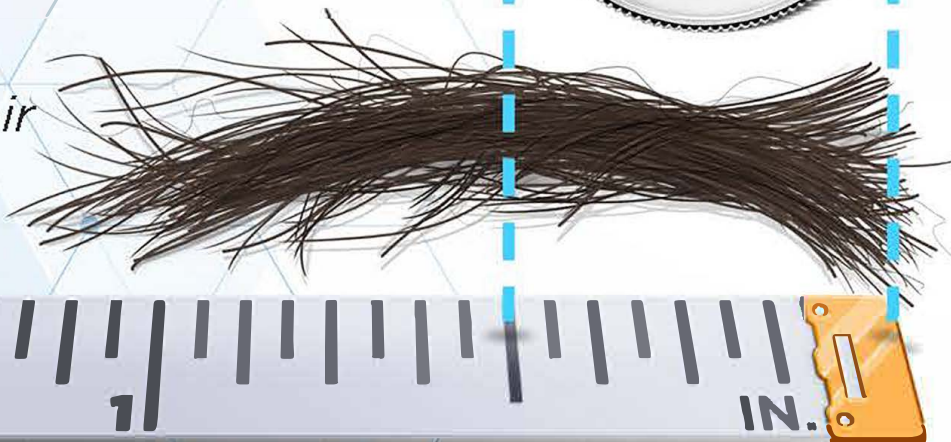


HAIR TESTING REQUIRES A COSMETICALLY UNDETECTABLE LOCK OF HAIR, PREFERABLY SNIPPED AT THE SCALP LINE FROM THE BACK OF THE HEAD, JUST BELOW THE CROWN.

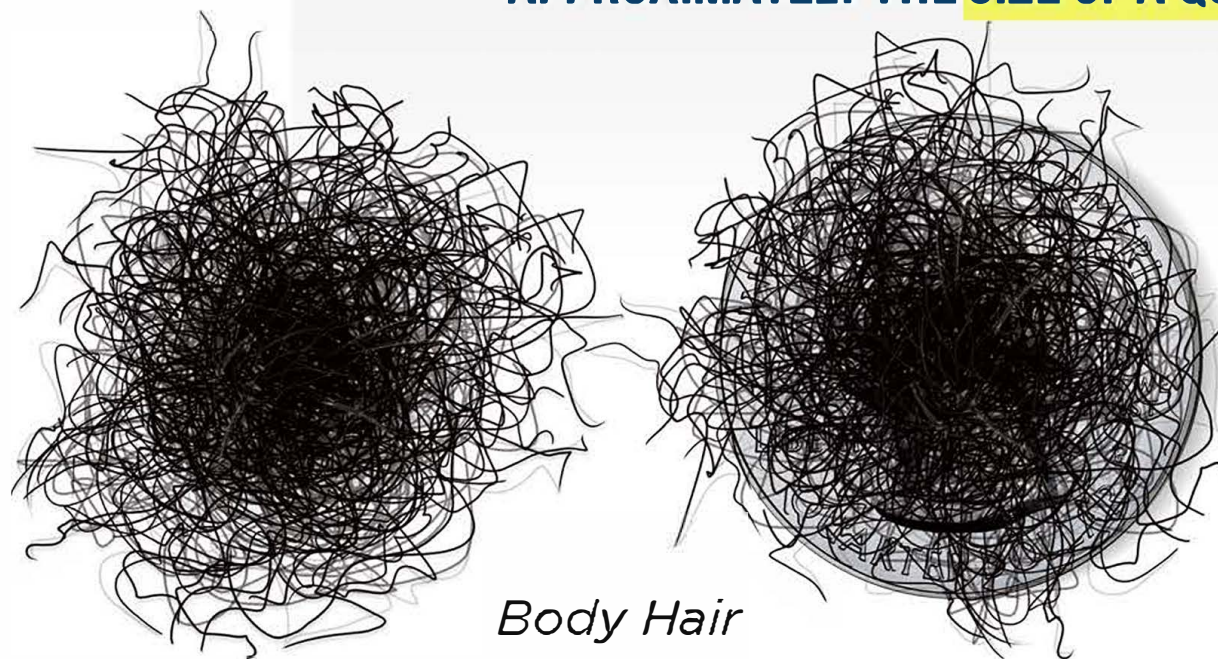
THE MINIMUM LENGTH FOR THE FOR A HEAD HAIR SAMPLE IS 1/2 INCH. THAT WOULD BE ABOUT THE LENGTH THAT A DIME IS WIDE. THERE IS NO MAXIMUM LIMIT ON LENGTH.



Head Hair



WHEN BODY HAIR IS USED, WE COLLECT ENOUGH TO BE APPROXIMATELY THE SIZE OF A QUARTER.



Body Hair



Number 2 Pencil Lead



WHETHER A SAMPLE IS TAKEN FROM THE HEAD OR FROM THE BODY, IT SHOULD TOTAL AT LEAST 1/2 INCH IN LENGTH. FOR THICKNESS, THE STRANDS GATHERED TOGETHER SHOULD BE AT LEAST THE WIDTH OF THE LEAD FROM A STANDARD PENCIL.

THE LAB REQUIRES A MINIMUM OF 50 MG OF HAIR FOR TESTING. WE COLLECT 60 MG TO ENSURE A QUANTITY NOT SUFFICIENT (QNS) SITUATION WILL NOT OCCUR.

